

FABULOUS DOWNTOWN ST PETERSBURG HIGH RISE DEVELOPMENT SITE—\$ 1,200,000



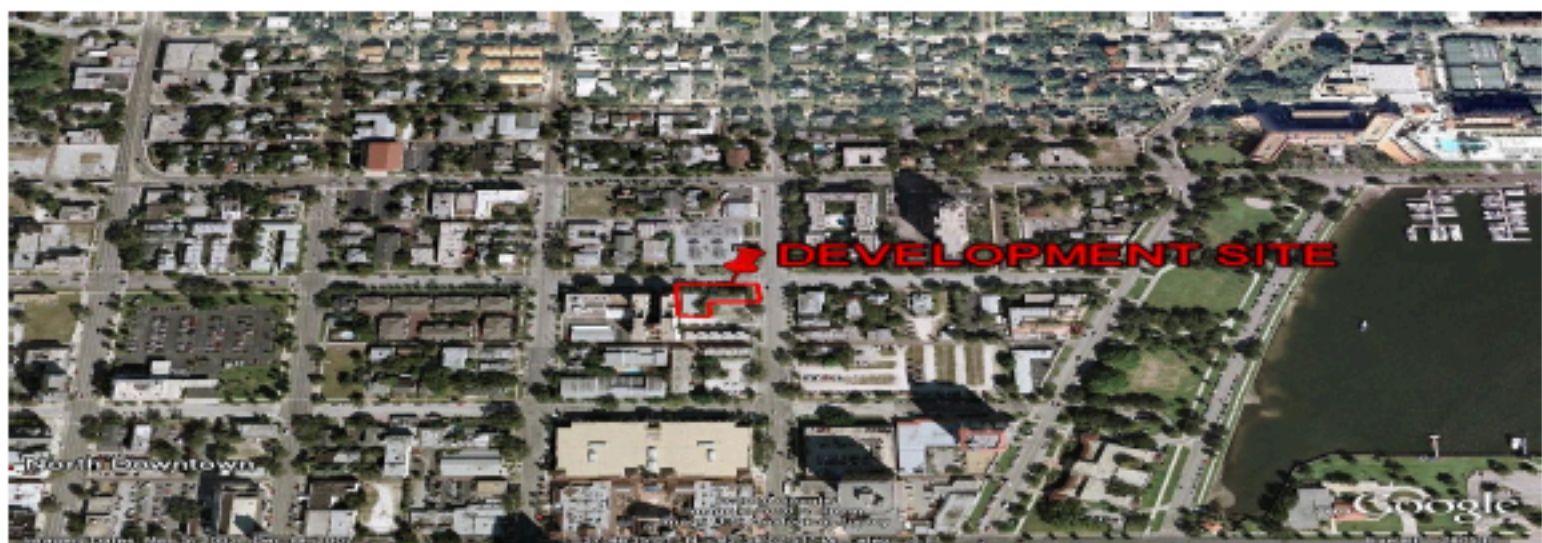
ONE OF THE LAST GREAT DEVELOPMENT SITES IN HIGHLY DESIRABLE DOWNTOWN ST PETERSBURG, WITH ITS ECLECTIC GALLERIES, SHOPPING, DINING, MUSEUMS WATERFRONT PARKS, AND MANY CITY SPONSORED EVENTS & FESTIVALS

JUST ONE SHORT BLOCK FROM BEACH DR, THIS SITE IS IDEAL FOR EITHER CONDOS OR AN UPSCALE APARTMENT BUILDING

PLANS HAVE BEEN APPROVED FOR A 19 UNIT, 13 STORY CONDOMINIUM PROJECT, WITH TWO YEARS LEFT ON THE APPROVAL TO PULL PERMITS, & ALL ENGINEERING PLANS, SURVEYS, ETC ARE INCLUDED IN PRICE

ALSO PRELIMINARY PLANS, NOT YET APPROVED, ARE AVAILABLE FOR A FIVE STORY 20 UNIT APARTMENT BUILDING, WHICH WOULD HAVE A GREAT RENTAL MARKET

THE TWO LOTS TOTAL ABOUT 9,814 SQ FT, AND ARE CLEARED AND READY TO BUILD



This information has been secured from sources we believe to be reliable, but we make no representations or warranties, expressed or implied, as to the accuracy of the information. Viewer must verify the information and bears all risks for any inaccuracies.



PATRICK CALHOON—CENTURY 21 REAL ESTATE CHAMPIONS
4350 DUHME RD., MADEIRA BEACH, FL, 33708
WWW.PATCALHOON.COM PATCALHOON@AOL.COM 727-398-2774

LICENSED IN :
FL, N C, SC, GA,
CT, TN, & MA !