

HIGH TRAFFIC REDEVELOPMENT SITE FOR SALE

TYRONE BLVD & 22ND AVE N—\$ 1,899,000



LOT SIZE IS 13,843 SQUARE FEET

GREAT REDEVELOPMENT SITE,
IDEAL FOR OFFICE, RETAIL,
RESTAURANT, OR ???

166' FRONTAGE ON TYRONE BLVD
& 153' FRONTAGE ON 22ND AVE N,
ONE OF BUSIEST PINELLAS
COUNTY INTERSECTIONS

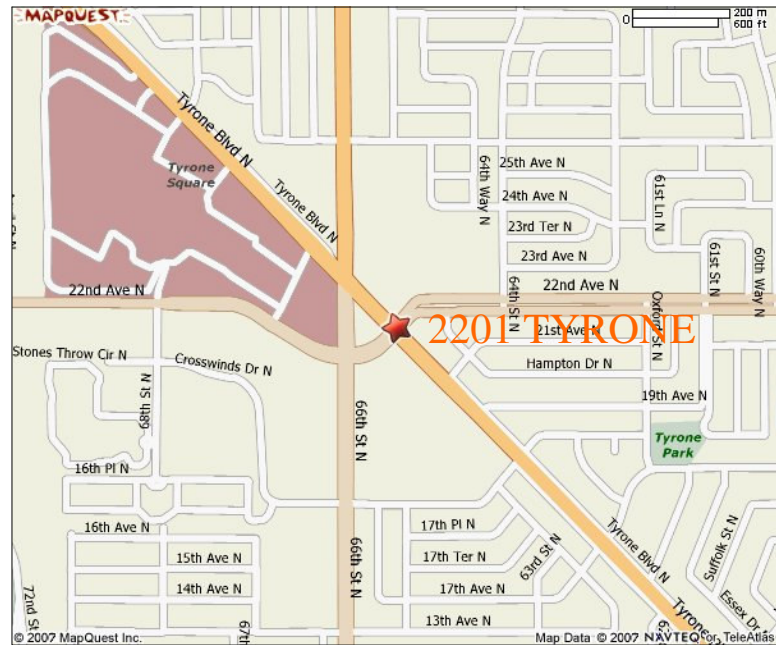
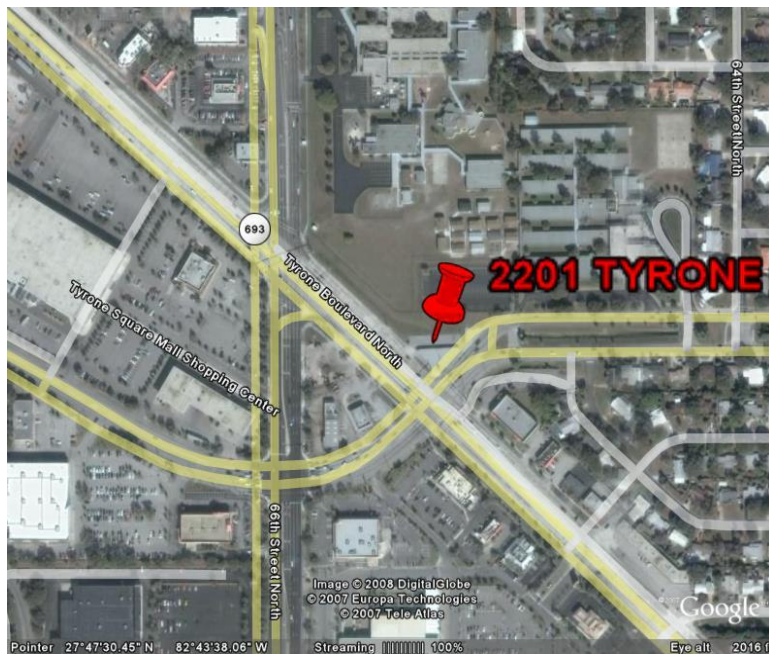
EASY INGRESS AND EGRESS FROM
BOTH ROADS, WITH CURB CUTS

CCS-1 ZONING ALLOWS MANY
USES, WITH FAR DETERMINED BY
SPECIFIC USE OF PROPERTY

BACKS UP TO DOT OWNED PIECE
OF LAND WITH PERMISSION TO
USE FOR ADDITIONAL PARKING

EXISTING BUILDING IS BLOCK
CONSTRUCTION WITH 3,566 SQ FT

2201 TYRONE BLVD, ST PETERSBURG, FLORIDA
CURRENT TENANT WILL BE RELOCATING



This information has been secured from sources we believe to be reliable, but we make no representations or warranties, expressed or implied, as to the accuracy of the information. Viewer must verify the information and bears all risks for any inaccuracies.



PATRICK CALHOON—CENTURY 21 REAL ESTATE CHAMPIONS
4350 DUHME RD., MADEIRA BEACH, FL, 33708
WWW.PATCALHOON.COM PATCALHOON@AOL.COM 727-398-2774

ALSO LICENSED
OR AFFILIATED IN
GEORGIA, NORTH
CAROLINA
CONNECTICUT &
MASSACHUSETTS !